

mountie



working for you 24 hours a day
7 days a week™

MOUNTIE MAGNETSIGN® pole mounted, two-sided rental signs

benefits

- customized design with unlimited creative potential
- cost effective, just a few dollars a day
- access to large volumes of potential customers
- on-premise targeted advertising creates impulse purchases
- eye-catching fluorescent magnetic letters and graphics
- 24 hours a day, 7 days a week, week after week
- up to 40 sq. ft. of powerful full-color curbside advertising
- a Magnetsign can't be turned off, thrown away, spam filtered, channel flipped, affected by technical or electrical issues
- quick copy change service
- we can promote your brand, logos and customized graphics
- use of branding and logos allows you to access supplier and co-op advertising dollars, supplier discounts or incentives
- mounts to most poles or posts, secure tamper proof screens, temporary or permanent installation, will not damage poles
- environmentally friendly advertising, our signs, letters and graphics are reusable, Magnetsigns don't use electricity

uses

- **marketing** - product and service promotions and launches
- **promotions** - seasonal, new arrivals and offers, pricing, branding, institutional, personal, sponsorships, causes, ideas
- **sales** - clearance, liquidation, sidewalk sales, blowout, garage, moonlight madness, holidays, celebration, auctions, theme
- **events** - grand openings, anniversaries, parties, fundraising, shows, meetings, entertainment, sports, arts, educational, charity, religious
- **campaigns** - cross media, elections, public relations, fundraising, self promotion, safety, awareness, humanitarian
- **recruiting** - help wanted, students, tenants, volunteers, members, players, parishioners, crime stoppers, enforcement, military
- **notices** - hours, contact information, vacancies, recognition, legal, health, congratulations, periodic, warnings, disclaimers, tenders
- **announcements** - news, public, civic, organizational, invitations, new management, traffic, family
- **directions** - relocations, poor locations, construction, renovations, parking, directional, maps, you-pick produce

sizes

5 ft. high x 4 ft. wide = 20 sq. ft. per side

rates

option 1:

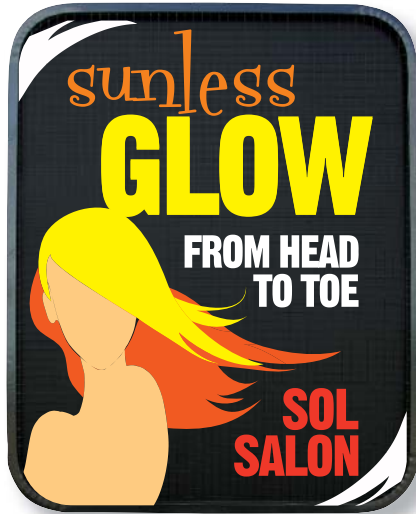
option 2:

option 3:

say it... curbside®



layout samples



This sign is typically mounted to an existing pole, or we can supply a pole and stand if you require one (both options shown above).

about us

Magnetsigns is an outdoor and indoor advertising company specializing in the rental of high-impact portable and permanent signs and displays using vibrant fluorescent letters and graphics. Our franchisees will customize your layout to fit the personality of your business. We professionally deliver and install your sign or display to your location and provide copy changes.

Franchise opportunities call 800-219-8977 or visit magnetsigns.com



contact

Patented in Canada and USA | ©2010 Magnetsigns Group